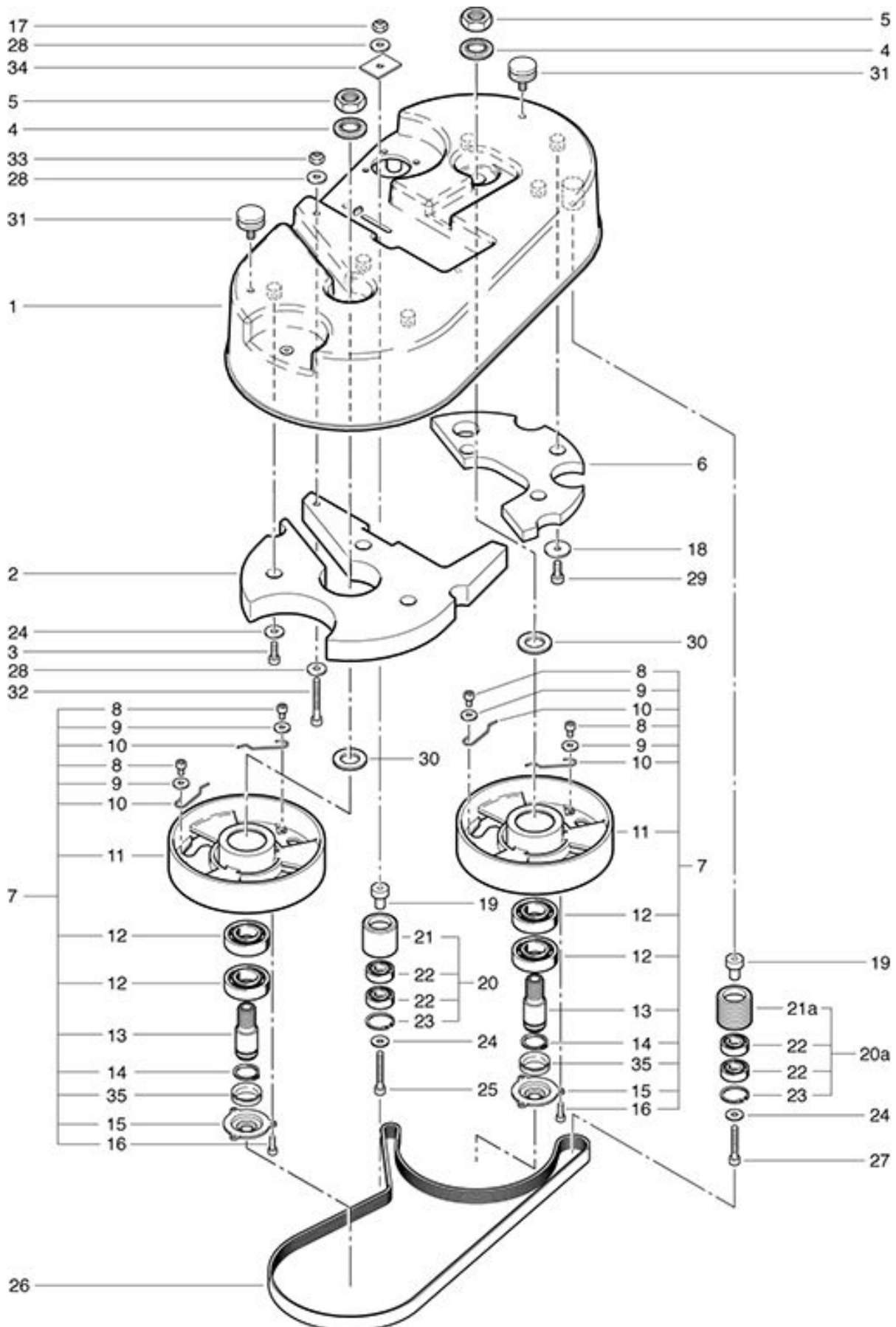


RA 560 B
Drive unit for brush head

As at: 11/14/11 Time:11:32



Buerstenantrieb

RA 560 B

Drive unit for brush head

As at: 11/14/11 Time:11:32

Pos.	Description	Reference
01	Motor housing up to machine no. 8404	560.205
01.	Motor housing beg. Mach. no. 8405.001	560.206
02	Weight	560.275
03	Hexagon screw M 6x20	P...486 P
04	Locking screw M 20	P...498 Q
05	Hexagon nut M 20x1.5	P...492 R
06	Weight beside motor	560.270
07	Drive pulley left complete including Items 8-16, 35	560.210
08	Hexagon screw M 5x8	P...475 H
09	Washer M 5	P...496 H
10	Spring	560.216
11	Brush spripe	560.215
12	Ball bearing	P...316 P
13	Main axle	560.212
14	Retaining washer 24x1 DIN 471	P...513 D
15	Hub cover	560.218
16	Hexagon screw M 4x8	P...481 Q
17	Hexagon nut M 6	P...493 K
18	Washer M 6x25	P...497 Y
19	Bearing pin	560.256
20	Belt tension pulley compl. including Items 21-23	560.255
20a	Belt tension pulley compl. including Items 21a-23 up to machine no. 8404	560.255
20a.	Belt tension pulley compl. including Items 21a-23 beg. machine no. 8405.001	560.254
21	Belt tension pulley	560.257
21a	Belt tension pulley up to machine no. 8404	560.257
21a.	Belt tension pulley beg. machine no. 8405.001	560.258
22	Ball bearing	P...315 I
23	Retaining washer DIN 472	P...513 U
24	Washer M 6	P...497 K
25	Hexagon screw M 6x45	P...488 U
26	Poly-V drive belt up to machine no. 8404	560.252
26.	Poly-V drive belt beg. machine no. 8405.001	560.253
27	Hexagon screw M 6x35	P...486 S
28	Washer M 6	P...496 L
29	Hexagon screw M 6x16	P...486 R
30	Washer 20/32/0.7	6230258
31	Rubber buffer	560.286
32	Hexagon screw M 5x40	P...486 N
33	Hexagon nut M 5	P...493 G
34	Disk	560.268
35	V-profile ring VA 25	P...343