

# OFL 100

OPTICAL TIME DOMAIN REFLECTOMETER

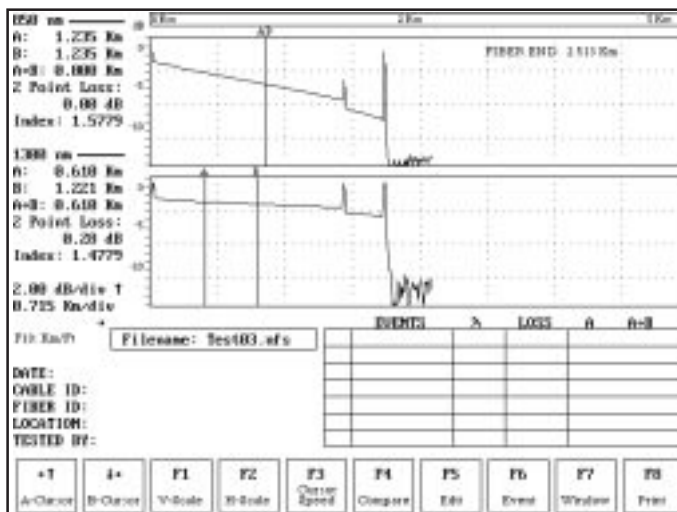
**NOYES**  
FIBER SYSTEMS



- Singlemode & Multimode Available
- Dual Wavelength Available (850 nm & 1310 nm)
- Complete Portability
- Low Cost
- Stores Up to 98 Traces
- PCPLOT Software Provides Full Trace Documentation
- Data Storage on DOS Disk



## DESCRIPTION



Trace View Screen from PCPLOT2 Software  
(Traces Generated from the OFL 100-DM)

The OFL 100 is designed to be a rugged, reliable, portable test instrument having many features required to measure and maintain multimode and singlemode fiber optic cables. Four models of OFL 100 are available to suit your testing needs.

The OFL 100-MM operates at 850 nm for multimode LAN testing. The OFL 100-HR is used for testing singlemode fiber and short distance multimode local loops or campus networks that operate at 850 nm. The OFL 100-LR is calibrated at 1310 nm for singlemode Telecom and CATV applications. The OFL 100-DM operates at 850 nm and 1310 nm for multimode LAN systems.

When used by itself, the OFL 100 is a fast, flexible optical fault locator. Its one button operation and easy to read alphanumeric display enable the user to quickly pinpoint the number of faults, their loss, and their locations up to 40 km. Up to 98 traces can be stored in the OFL 100 for future downloading to a serial thermal printer in the field or to an office printer via a computer.

When coupled with a laptop or PC (DOS version 3.3 or higher), the OFL 100 becomes a powerful and versatile OTDR. Capture your traces out in the field and download them to a computer for complete analysis using the supplied PCPLOT software. Two point splice loss measurements, vertical and horizontal trace expansion, automatic event recording, and printing are a few of the functions that are performed with the PCPLOT software.

The OFL 100 mini OTDR makes performing, recording, and printing measurements for certified documentation a breeze.

## SPECIFICATIONS

MODEL	OFL 100-HR	OFL 100-MM	OFL 100-DM	OFL 100-LR <sup>1</sup>
-------	------------	------------	------------	-------------------------

### OPERATIONAL SPECIFICATIONS

Calibrated Wavelength	850 ± 20 nm	850 ± 20 nm	850±20 nm/1310±30 nm	1310 ±30 nm
Fiber Type	SM / MM	MM	MM	SM
Event Detect Range	12 dB	12 dB	10 dB <sup>2</sup>	9 dB
End Measurement Accuracy	±10 m @ 5 km	±10 m @ 3 km	±10 m @ 3 km	±40 m @ 30 km
Minimum Distance Measured	10 m (reflective)	10 m (reflective)	10 m (reflective)	50 m (reflective)
Optical Connector Interface	FC or ST	ST	ST	ST or FC
Threshold Level	.25 dB, 0.5 dB, 1.0 dB, 2.0 dB, 4.0 dB			1.0 dB (fixed)
Refractive Index	1.400 - 1.699			

### GENERAL SPECIFICATIONS

Display	2 Line by 20 Character LCD Display			
Distance Display units	Meters or Feet			
Hardcopy Trace Output	RS 232			
DOS Requirements	MS-DOS 3.3 or Above			
Operating Temperature	0° to 40° C			
Storage Temperature	-20° to 60° C			
Size	5" H x 7.5" W x 6.0" D (12.7 x 19.1 x 15.2 cm)			
Weight	8 lbs. (3.58 kg)			
Power	Lead Acid rechargeable or AC			
Battery Life	6 hrs.	6 hrs.	4 hrs.	4 hrs.
Serial Port	RS 232			
Laser Classification	Class 1, 21 CFR 1040			

<sup>1</sup> Not CE compliant    <sup>2</sup> With PCPLOT2 software

## ORDERING INFORMATION

All OFL 100 models come with a soft carry case, instruction manual, serial transfer cable (RS 232), PCPLOT software, 110 volt AC adapter/charger (220 volt optional) and recording pads. Please specify charger type when ordering.

OFL 100-HR with FC .....	OFL1-PC-0900	OFL 100-MM with FC .....	OFL1-PC-0903
OFL 100-HR with ST .....	OFL1-PC-0905	OFL 100-MM with ST .....	OFL1-PC-0901
OFL 100-LR with FC .....	OFL1-10-0900	OFL 100-DM with ST .....	OFL2-00-0900
OFL 100-LR with ST .....	OFL1-10-0901		

### AVAILABLE ACCESSORIES

Thermal Printer .....	OFL1-00-0901	Recording Pads .....	8800-15-0200
Thermal Paper .....	2000-01-0002	Patch Cords .....	Consult Factory



Eastgate Park • PO Box 398 • Laconia, NH 03247  
Tel: 800-321-5298 • 603-528-7780 • Fax: 603-528-2025

