

VL1000 Automatic lensmeter

Easy to use with high precision

REF 7260062

A lensmeter with all the measurements you require : Progressive, Prism, PD, UV, & Contact Lenses. Device with intuitive user interface and striking design. Visionix VL-1000 is more attractive, more convenient and more stable.

Measurement screen

Easy to use with recognisable icons, the VL1000 provides a user friendly graphical interface for an immediate understanding.

Progressive measurement

Automatic measurement of progressive lenses. A graph helps the operator to improve accuracy and speed in the measurement of near and far vision.

UV mode

Graph with the percentage of UV transmission.

Colours screen

Integrated printer

Electronic PD measurement



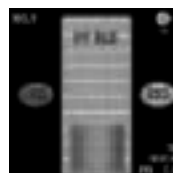
Technical specifications

General	
Dimensions	W 190 mm x H 377 mm x D 237 mm
Weight	5,5 kg
Cylinder	- , + , \pm
Prism	Rectangular / Polar / Displacement
Sampling speed	0.016 sec
LED Wavelength	630nm
Contact lenses	Hard and Soft
Display	TFT LCD Display (320 x 240 LED Backlight)
Power supply	AC 100-120V / AC 220-240V 50 / 60Hz
ABBE values	Manual compensation
Data output	RS-232
Standards	CE
Measurement range	
Sphere power	0 \sim \pm 25.00D
Cylinder power	0 \sim \pm 10.00D
Cylinder axis	0° \sim 180°(1°)
Add power	0 \sim 10D
Prism power	0 \sim 10 Δ
PD measurement	
Diopter	0.01 / 0.125 / 0.25D
Prism	0.01 / 0.125 / 0.25 Δ



Progressive measurement

Automatic measure of progressive lenses, with a graph to improve accuracy and speed in the measurement of near and far vision.



UV mode

Graph with the percentage of UV transmission.